



# OFFICE 365 SECURITY HEALTHCHECK

Secure your cloud productivity and reduce the risk of compromise

Today's businesses rely heavily on Microsoft Office 365 to power their remote working. With so many configuration options and a cloud-based infrastructure, there's a large scope for security flaws to be introduced. Bulletproof's Office 365 Security Healthcheck will harden your business against these hidden cyber vulnerabilities to protect your corporate data.

## Don't let productivity compromise security

One of the primary challenges faced by businesses is understanding the technical and procedural risks associated with cloud services. That's why Bulletproof developed the Office 365 Security Healthcheck. Our expert security consultants have years of expertise in managing Office 365 platforms, and will also use their experience and lessons learnt from implementing Cyber Essentials, ISO 27001, PCI DSS & GDPR to deliver a comprehensive security audit. With over 70 checks spread across 6 core areas, Bulletproof conduct a thorough overview of your Office 365 strategy and technical configuration to uncover security weaknesses. These are documented in an easy-to-understand report, which is broken down into technical and executive sections, and also includes helpful remediation advice.

## A comprehensive security assessment

- Follows best practices for hardening
- Over 70 checks across 6 key areas
- Remote delivery
- Requires minimal permissions
- Protects your corporate data



## Reduce your risk of compromise

With 72 individual checks, the Bulletproof Office 365 Security Healthcheck covers a wide range of areas to ensure that no security vulnerabilities are overlooked. Through interviews and remote technical assessments, Bulletproof scrutinises your setup to identify areas of improvement that greatly reduce the chance of compromise.



### Account & Authentication

*19 Checks*

Protects against account compromise by examining authentication controls, access settings, password security, Azure AD risk policies & more.



### Data Management

*8 Checks*

Reduces the chance of data leakage and incorrect access to sensitive content through correct DLP & file sharing policies and configurations.



### Email Security & Exchange Online

*14 Checks*

Secures your vital email communication with several best-practice configuration validations including attachments, forwarding and domains.



### Auditing

*15 Checks*

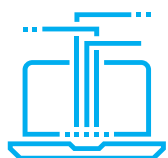
Ensures monitoring is in-place to proactively detect attacks against your Office 365 environment, as well as meet your compliance requirements.



### Storage

*3 Checks*

Defends against leakage of sensitive data through misconfigurations, including sharing, synching and whitelisting best practices.



### Mobile Device Management

*13 Checks*

Supports your BYOD policy to secure remote working employees. Checks include password strategy, anti-brute force measures and biometrics.



## Secure your Office 365 environment today

Find out more about how we can harden your Office 365 setup & support your remote working productivity. Email [contact@bulletproof.co.uk](mailto:contact@bulletproof.co.uk) or call 01438 532 900.